




Open Data Islands and Communities



Alan Dix

Tiree Tech Wave, Talis,
University of Birmingham

<http://alandix.com>
<http://tireetechwave.org>



ECCI, Edinburgh, 18th July 2014

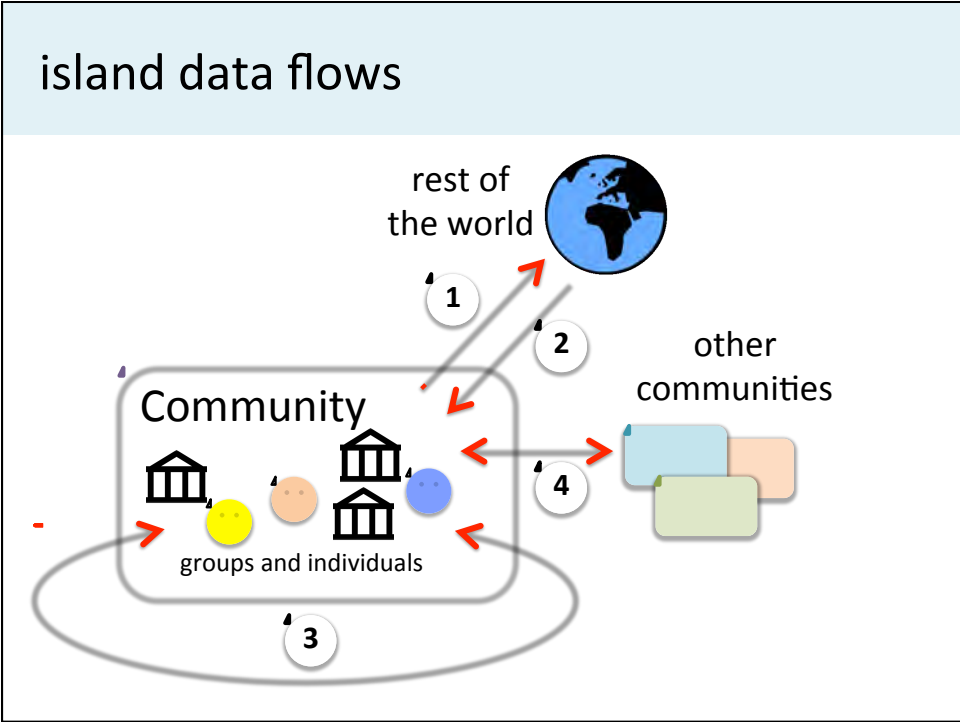
Open Data

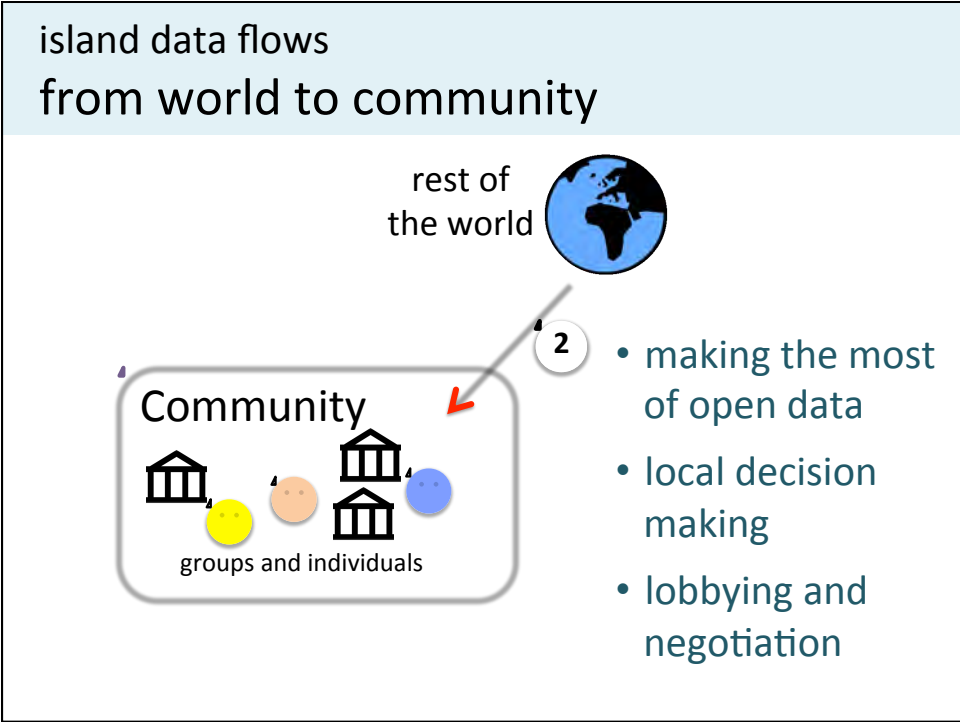
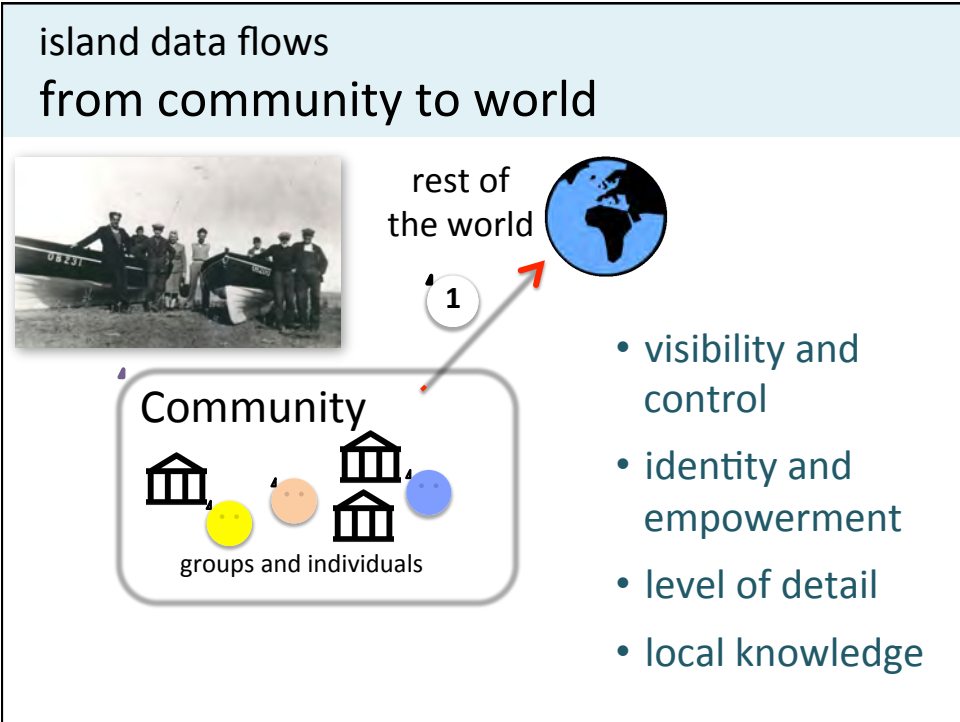
everyone is doing it

Governments, Cities, local gov.

Big Data does it with MapReduce
Semantic Data does it with RDF

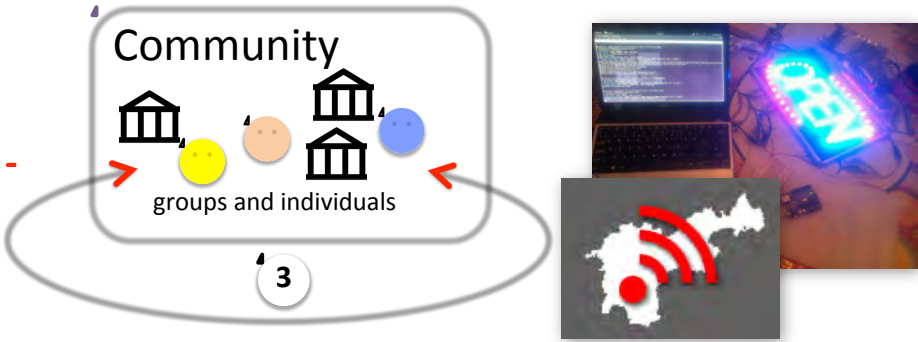
In C21 Data is Power





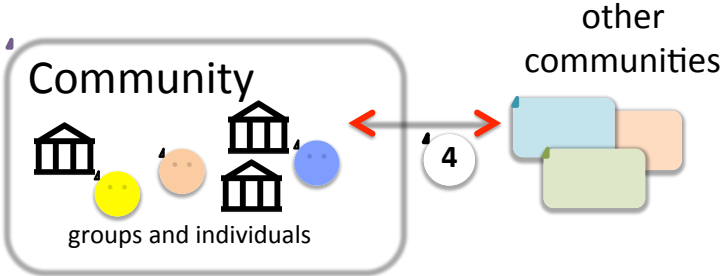
island data flows within the community

- gossip is not enough!
- sparse, dispersed population
- social cohesion and economic benefits



island data flows between communities

- sharing best practice
- brand presence
- interlinked data



small may be beautiful
but ...

barriers and challenges

expertise and resources

"I don't know if any public sector has necessarily cracked the nut on attracting the right skills and capabilities," ...

"The commercial sector has, because they've got the dollars to spend." (Ian Bartram, Gartner)

activists – often (semi) retirees

busy life style – multiple jobs and roles

barriers and challenges

expertise and resources

reusable data flows

"create solutions that are easily reuseable in other European cities" (aims, Code for Europe)

even more important for small communities

meta-data: find and make sense of local data

reusable apps, data access portals, ...

barriers and challenges

expertise and resources

reusable data flows

interaction design

limited broadband and mobile connectivity

ease of access without technical support

standard formats for data entry (e.g. spreadsheet)

bespoke but reusable apps/plugins, ...

barriers and challenges

expertise and resources

reusable data flows

interaction design

heterogeneous multi-source data

make apps fit people's data formats

long tail of small data

provenance



in summary ... benefits to:

the community

empowerment and control

availability of information

communication within and between communities

the world

improved quality of data

level of detail of data

local knowledge and understanding

